

April 2023

Guided Pathways Work Plan Updates

FIRESIDE HALL



CONTRA
COSTA
COLLEGE

Guided Pathways Work Plan Update

College Council ~ April 13, 2023

Academic and Classified Senates ~ April 17, 2023

Associated Student Union ~ April 19, 2023

1 CCCCO GP Work Plan – Issued March 15, 2023, and Due June 1, 2023

2 Comprehensive and Integrated Planning:
Using Existing Key College Plans, Student Success Metrics
& Integrating Mandates and Initiatives

3 CCCCO Instructions for the GP Work Plan Development

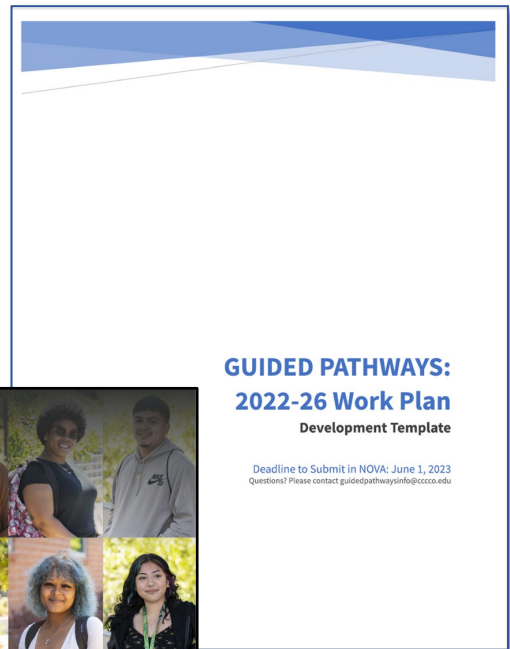
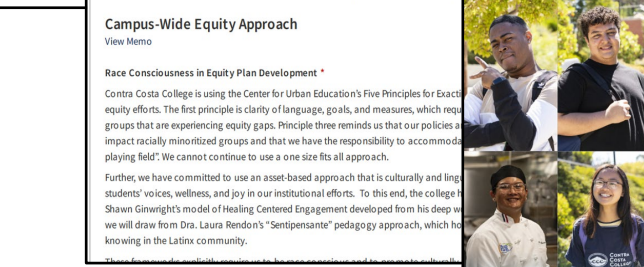
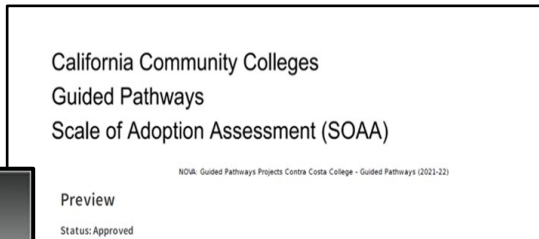
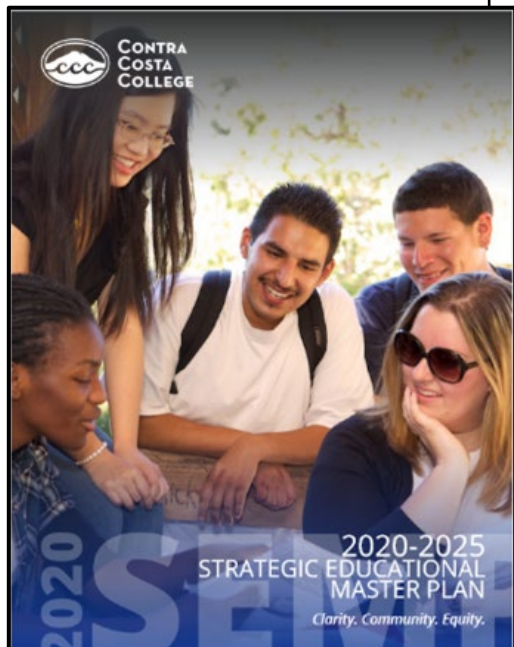
4 CCC Governance Review

5 Submission

Comprehensive and Integrated Plan Review

Existing Key College Plans

Guided Pathways Work Plan



And more...

Key College Plans

Guided Pathways Work Plan

**Guided Pathways:
2022-2026 Work Plan**
CCC Students
(global and target student
populations DI)

2021-2022
Guided Pathways
Scale of Adoption
Assessment (SOAA)

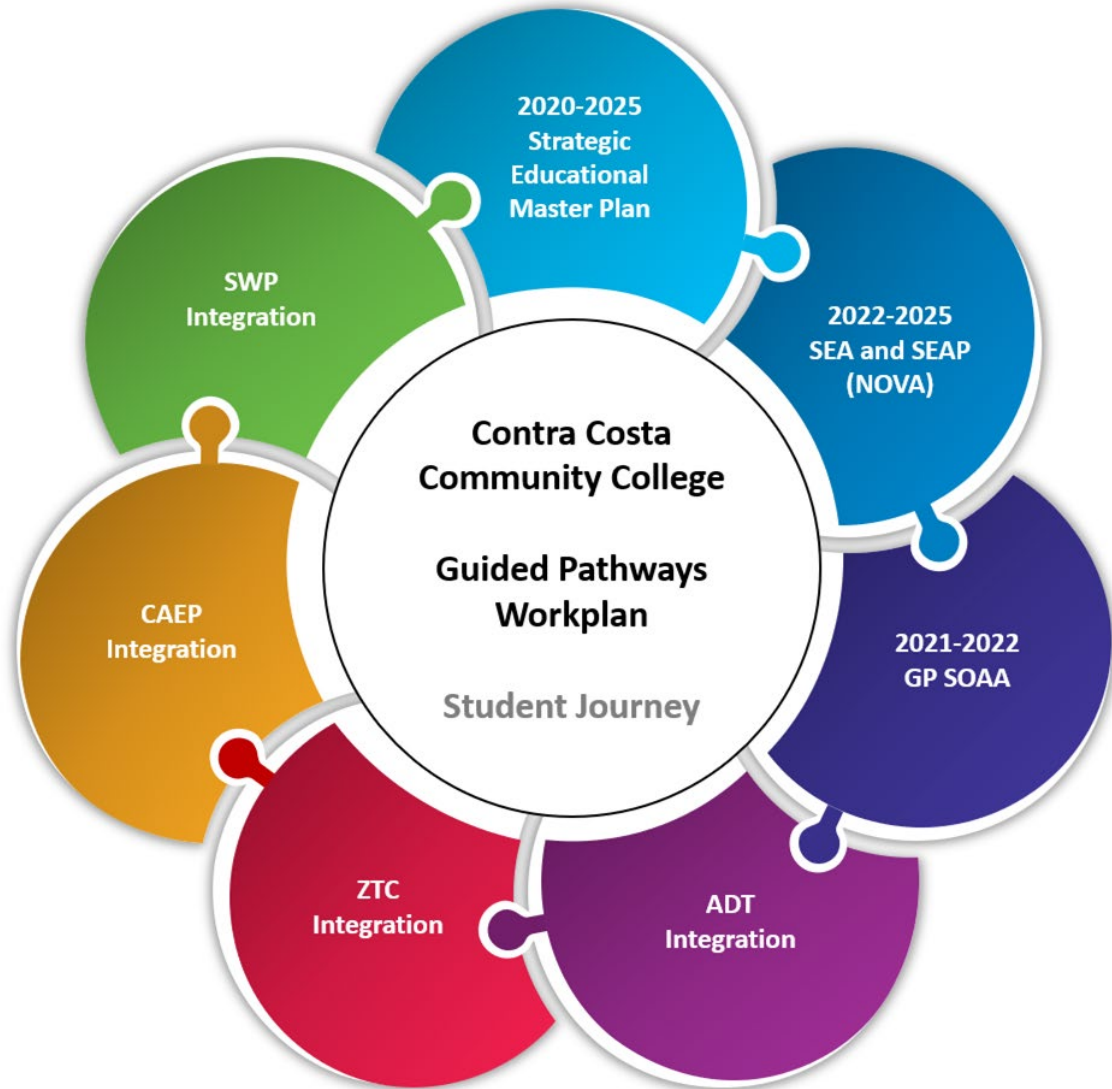
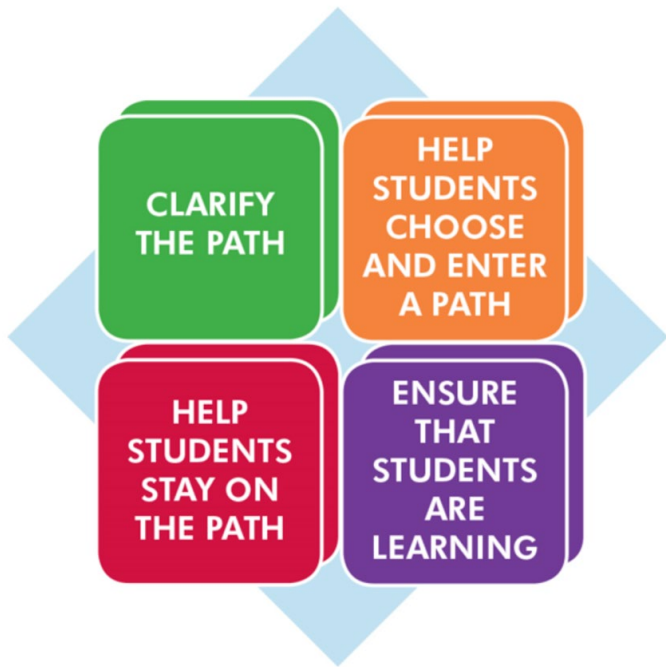


2020-2025
Strategic Educational
Master Plan
Mission, Vision, Values and
Goals

2022-2025
Student Equity Plan (SEA)
Student Equity & Achievement Plan
(SEAP) CCCCC NOVA

**CCC SEA offers a comprehensive
description of the College's
commitment to student equity; SEAP is
the CCCCC NOVA submission
(prescriptive template)*

Comprehensive and Integrated Planning



Five Student Success Metrics

Successful Enrollment

- Among applicants who indicated an intent to enroll in the selected college in the selected year in the selected year as a non-special admit student for the first time, the proportion of cohort students who enrolled in the same community college in the selected year.

Completed Transfer-Level Math and English

- Among students in selected student journey (cohort), the proportion who completed both transfer-level math and English in their first academic year of credit enrollment within the district.

Persistence: First Primary Term to Secondary Term

- Among enrollments by cohort students, the course success rate the proportion who enrolled in fall and spring terms in the selected year, excluding students who completed an award or transferred to a postsecondary institution.

Transfer

- Among students in selected student journey (cohort) who earned 12 or more units at any time and at any college up to and including the selected year and who exited the community college system, the number of students who enrolled in a four-year institution in the selected year, the number of cohort student who enrolled in any four-year postsecondary institution in the subsequent year or 4 years after for 3-year cohort, 5 years after for 4-year cohort and 7 years after for 6-year cohort.

Completion

- Either among students in the cohort, the unduplicated count of students who earned one or more of the following CCCC's approved certificates, associate degree, and/or CCC Baccalaureate degree, and had one enrollment in the selected year in the district that they earned the award within 3, 4, or 6 years.

Additional Requirement: The Integration of Mandates and Initiatives Guided Pathways Work Plan

Student Equity and Achievement (SEA/SEAP)

Associate Degree for Transfer (ADT) Integration

Zero Textbook Cost to Degree (ZTC) Integration

California Adult Education Program (CAEP) Integration

Strong Workforce Program (SWP) Integration

CCCCO Instructions – GP Work Plan

01 Integrated Planning

Align GP with existing key plans, mandates, and initiatives

01

02 Workplan Questions (new)

- Metric-centered planning aligned to SEA/SEAP and integrating GP across campus programs
- Student Reporting: Global (optional) with SEA/SEAP Required (target pops)

02

03 Selections (new)

- <50%
- 50%-70%
- 75% to Complete

03

04 Outline

- Goals
- Barriers
- Remove Barriers
- Add Actions
- Equity Considerations
- Sustainability

04

05 Timeline (released late)

- GP Workplan issued in March 15, 2023
- Deadline is June 1, 2023

05

06 Governance Review, Engagement, Submission

- Constituency (fast-track) review due to deadline
- Encourage Engagement
- GP Workplan Writing Leads

06

Student Success Metric & Plan Integration	GP Work Plan - Writing Team Leads
Successful Enrollment	Rod Santos
Persistence: First Primary Term to Secondary Term	George Mills
Completed Transfer-Level Math and English	Elvia Ornelas-Garcia and Rene Sporer
Transfer	Evan Decker and George Mills
Completion	Jason Berner and Kenyetta Tribble
Student Equity and Achievement Program	Mayra Padilla
Associate Degree for Transfer	Jason Berner and Rod Santos
Zero-Textbook Cost to Degree (ZTC) Program	Maritez Apigo
California Adult Education (CAEP) Program	Mariah Bruce
Strong Workforce Program (SWP)	Evan Decker and Ashley Phillips

Guided Pathways - Iconography



**BUSINESS + APPLIED
TECHNOLOGY**



**FINE, MEDIA, VISUAL
+ CULINARY ARTS**



HEALTH + WELLNESS



**LANGUAGE
+ COMMUNICATIONS**



**PEOPLE, CULTURE
+ SOCIAL SCIENCES**



**SCIENCE, TECHNOLOGY,
ENGINEERING + MATH**

Guided Pathways - Iconography



Other GP Updates

- 1) **Assess the status of program maps** (In Progress)
- 2) **Build a multi-term course schedule to align with program maps** (In Progress)
- 3) **Coordinate HS to CCC course alignment to improve and support student success in transfer-level math and English** (HS Counselors Conference)
- 4) **Create A&C pathway Success Teams** (In Progress)
- 5) **Align marketing and messaging** (Yay Comet Day 2023)
- 6) **Professional Development for faculty and classified professionals related to the integration of GP, SEAP, DO DEI and SCFF.** (Ongoing)

GUIDED PATHWAYS at California Community Colleges

Key Elements of Guided Pathways



Clarifying the Path & Program Mapping



ASSOCIATE DEGREE FOR CSU TRANSFER:
BUSINESS ADMINISTRATION
Learn more at www.contracosta.edu/business

BUSINESS

KICK-START YOUR PROFESSIONAL CAREER

Donec eu pellentesque justo. Nulla dictum finibus enim, sed efficitur nisi cursus vitae. Vivamus pellentesque augue ex, quis hendrerit urna.

Malesuada tincidunt. Morbi nec egestas eros. Class aptent taciti sociosqu ad litora torquent per conubia nostra, per inceptos himenaeos. Duis et commodo ante. Vestibulum sem leo, dictum non egestas non, accumsan sit amet lectus.

Fusce gravida eu velit ut gravida. Suspendisse placerat in mi tristique laoreet. Aenean sit amet dignissim nulla, ac eleifend magna. Mauris lobortis laoreet hendrerit. Aenean laoreet orci libero, venenatis vestibulum nulla gravida in.

If you want to know more about jobs and salaries for business majors, check out our online **Career Coach** at contracosta.edu/business.

FAST FACTS ABOUT JOBS IN BUSINESS

- EXPRESS YOURSELF.
- HELP SHAPE OUR CULTURE.
- DO SOMETHING DIFFERENT EVERY DAY.
- WORK IN, ENTERTAINMENT, EDUCATION OR ADVERTISING.

Provided career information in marketing, research, analysis, administrative services, management, and accounting with an average salary of \$90,500

Major Course + CSU GE | Major Course | CSU General Education Course | Elective Course | Special Course | Certificate Program Available | CSU GE Area



www.contracosta.edu



ASSOCIATE IN SCIENCE DEGREE - UC TRANSFER READY:

BIOLOGY + BIOTECHNOLOGY

Learn more at www.contracosta.edu/biotechnology

BIOTECHNOLOGY

BIOLOGY MAJOR TRANSFER WITH BIOTECHNOLOGY SKILLS

Malesuada tincidunt. Morbi nec egestas eros. Class aptent taciti sociosqu ad litora torquent per conubia nostra, per inceptos himenaeos. Duis et commodo ante. Vestibulum sem leo, dictum non egestas non, accumsan sit amet lectus.

Fusce gravida eu velit ut gravida. Suspendisse placerat in mi tristique laoreet. Aenean sit amet dignissim nulla, ac eleifend magna. Mauris lobortis laoreet hendrerit. Aenean laoreet orci libero, venenatis vestibulum nulla gravida in.

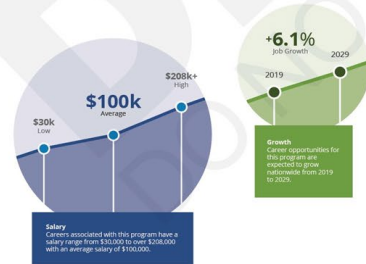
If you want to know more about jobs and salaries for biology majors, check out our online **Career Coach** at contracosta.edu/biotech.

Additional Certificates and Degrees Earned by Completing this Pathway

- Biotechnology Assistance Certificate (11-14 Units)
- Biotechnology Technician Certificate (16-17 Units)
- Biotechnology Associates Degree (26-27 Units)
- Biology Associates in Science Degree for Transfer (35-36 Units)

CAREERS IN BIOTECHNOLOGY

Nellus felis ultricies massa, id scelerisque mauris lorem vitae diam. Sed sit amet eros sit amet ipsum tempor laoreet vitae in lacus. Nullam dulcibus, varius ac turpis nec, dictum pharetra velit. Luctus consectetur auctor. Nam faucibus orci a nunc consequat, vel volutpat felis tristique.



BIOTECHNOLOGY PATHWAY COURSES

Major Course | Major Course + IGETC | IGETC Requirement | Certificate Course

Units	Fall - Term 1	GE
3	BIOSC 172: Introduction to Biotechnology	5B
1	BIOSC 172L: Introduction to Biotechnology Lab	5C
4-5	IGETC GE: English Composition	1A
3	IGETC GE: Oral Communication	1C
1	Counseling Course: COUNS 120/130/140	3
Units	Spring - Term 2	GE
2	BIOSC 182: Safety and Efficacy in Regulated Products	Major
5	CHEM 120: General College Chemistry I	5A*
5-6	MATH 190(S): Analytic Geometry and Calculus I	2A
Units	Fall - Term 3	GE
4	BIOSC 147: Cell and Molecular Biology	5B*
3	PHYS 120(H): General College Physics I (Honors Optional)	5A*
4	IGETC GE: Arts or Humanities	3A/3B
3	IGETC GE: Social and Behavioral Sciences	4
Units	Spring - Term 4	GE
2	BIOSC 157: Foundations in Biotechnology	Major
1	BIOSC 159: Foundations in Biotechnology Lab	Major
4	PHYS 121(H): General College Physics II (Honors Optional)	5A*
3-4	IGETC GE: Critical Thinking—English Composition	1B
3	IGETC GE: Arts or Humanities	3A/3B
Units	Fall - Term 5	GE
2	BIOSC 183: Mammalian Cell Culture or BIOSC 188: Biotechnology Operations	Major
5	CHEM 226: Organic Chemistry I	5A*
-	IGETC GE: Social and Behavioral Sciences	4
Units	Spring - Term 6	GE
2	BIOSC 186: Biomolecule Purification and Analysis	Major
4	BIOSC 145: Organismal Biology	5B*
5	CHEM 120: General College Chemistry I	5A*
Units	Summer - Term 7	GE
3	IGETC GE: Arts or Humanities	3A/3B

5A*/5B* Courses that include IGETC SC lab requirement built into the course



www.contracosta.edu



- Questions
- Comments